

# news

PARTNER  
INFORMATION

Product Announcement INTL – July 2020

MOBOTIX  
Hardware & Software News

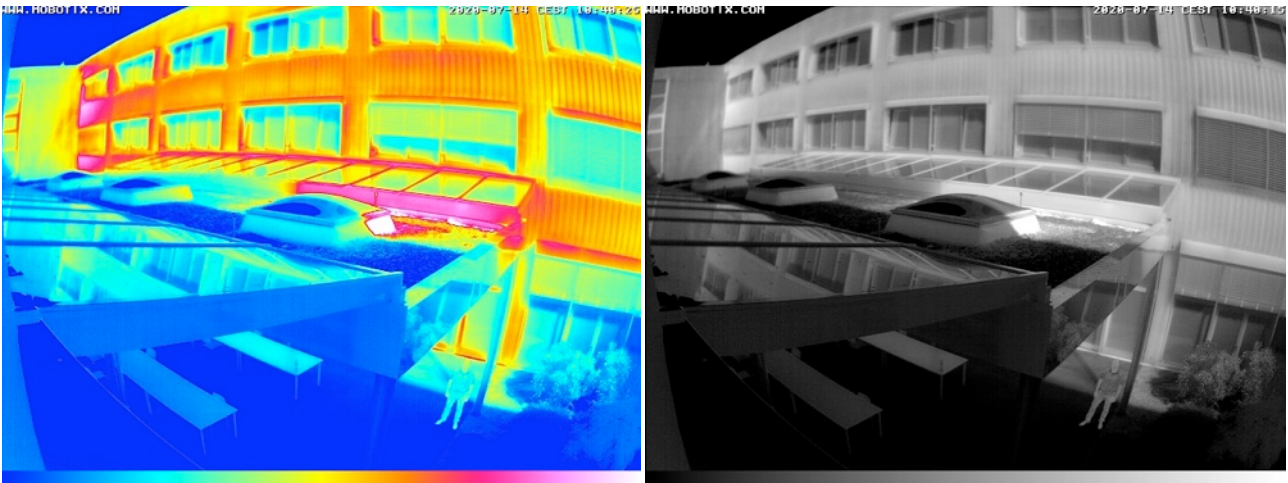
## Table of Contents

MOBOTIX Product Announcement INTL July 2020	Page
1. M73 Thermal & Firmware Update – New CIF & VGA Thermal Sensor Modules	3
2. New Optical Sensor Module For M73 – 30°, 60° And 120° Horizontal Viewing Angle	6
3. MOBOTIX MOVE NVR – Complete Solution Including VMS & App For MOBOTIX MOVE Cameras	8
4. MxManagementCenter (MxMC) 2.3.2 – Bugfixes And New Features	13
5. MxBell App Version 2.3.1 – Bugfixes And New Features	14
6. MOBOTIX NAS Firmware Updates – Increasing Data Security	15
7. MOBOTIX Professional Services – Service Package Exclusively For MOBOTIX Partners	16
8. Further MOBOTIX News – M73 With SySS Certificate, Back on Track, App Demo Clips	17
9. Schedule & Important Links	18

**Notes:** This document is intended for information and demand planning exclusively for MOBOTIX partners and may not be published in this form (digitally or as a printout) • Delivery only to commercial or industrial customers • Prices plus statutory VAT ex works Langmeil, Germany • Changes and errors excepted • MOBOTIX assumes no liability for technical errors, printing errors or omissions • © MOBOTIX AG 2020 • MOBOTIX is a trademark of MOBOTIX AG registered in the European Union, the USA and in other countries • All rights reserved.

**Machine Translation:** The English version of this Product Announcement that you are reading has been produced using a machine translation service. We apologise for any inconvenience caused by this.

# 1. M73 Thermal & Firmware Update – New CIF & VGA Thermal Sensor Modules



More details measurable and visible (but still no judicial identification of persons by thermal image possible):  
VGA thermal module with 90° x 69° angle of view, color and gray tone display

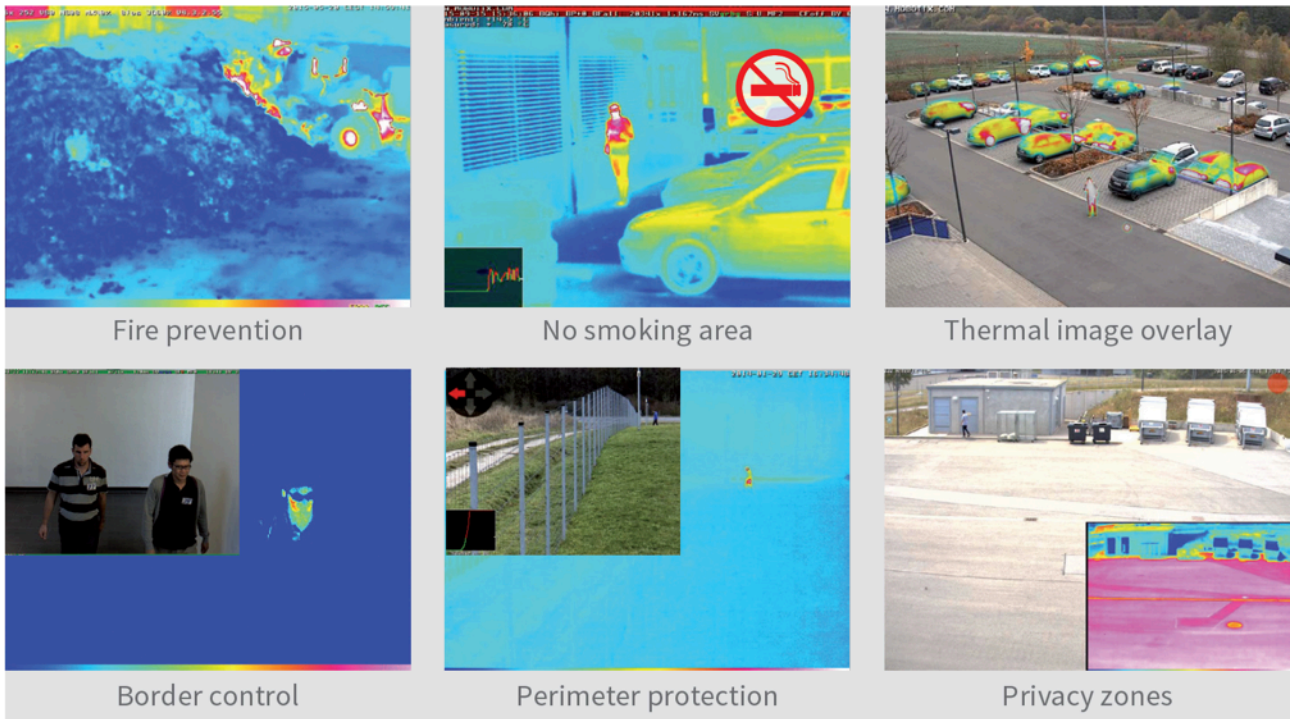
**Now available:** The MOBOTIX 7 camera M73 can now be equipped with **50 mK thermal sensor modules** – even retroactively! You can choose from all thermal sensor variants with CIF resolution (336 x 256) already known from the M16 thermal imaging camera plus **additional thermal sensor modules with VGA resolution (640 x 480)**. Thanks to the increased number of pixels and the extended image angles of up to 90° x 69° with the VGA thermal modules, more scene details can be seen, larger areas can be covered (perimeter protection) and temperature differences can be detected from greater distances than with the CIF variants.

Each individual thermal module of the MOBOTIX 7 system platform is again available in a version with and without **Thermal Radiometry** for temperature measurement in the entire image area (otherwise only in the center of the image, 2x2 pixels). The temperature measurement range of -40 to 550 °C still applies to all thermal modules. Thanks to the high-quality thermal sensors, temperature differences of 0.1 °C and more can again be visualized in practice.

Thermal Sensor Module Variants for M73		
Thermal resolution	Image angle (horiz. x vert.)	TR technology for temperature measurement
CIF: 336 x 256 pixels	17° x 13°	Available with and without TR technology
CIF: 336 x 256 pixels	25° x 19°	Available with and without TR technology
CIF: 336 x 256 pixels	45° x 35°	Available with and without TR technology
VGA: 640 x 480 pixels	32° x 26°	Available with and without TR technology
VGA: 640 x 480 pixels	45° x 37°	Available with and without TR technology
VGA: 640 x 480 pixels	69° x 56°	Available with and without TR technology
VGA: 640 x 480 pixels	90° x 69°	Available with and without TR technology

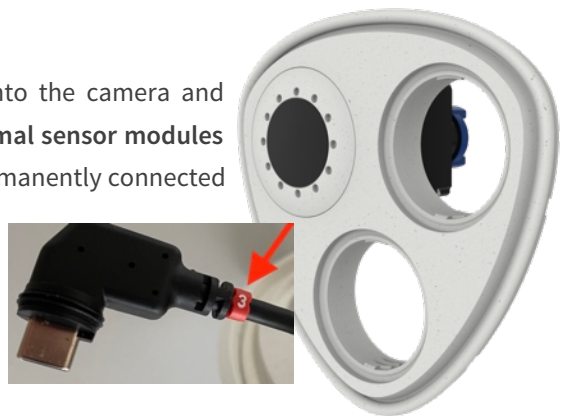
The **Thermal Radiometry (TR)** model variants (CIF and VGA) automatically alarm when the temperature exceeds or falls below defined limits. This is crucial for the detection of fire or heat sources. Up to **20 different temperature events** can be configured simultaneously in so-called TR windows or over the complete sensor image over a **temperature range of -40 to 550 °C**. In this way, critical situations can be analyzed in advance and, for example, the

next steps for fire prevention can be initiated. Critical systems such as emergency power generators, wind turbines or radio stations can also be maintained and tested remotely at low cost. With **Thermal Overlay**, so-called **"Hotspots"** in the visible image can be precisely identified and major damage avoided.



### Exchangeable thermal sensor modules for the M73

While the thermal module of the M16 is already integrated into the camera and cannot be replaced or retrofitted independently, there are **thermal sensor modules for the M73 that can be ordered separately** and are already permanently connected to an M73 camera front panel. To mount the M73, simply replace the unassembled original front panel of the M73 with the thermal sensor module front panel. **Important:** The thermal sensor module can only be connected with **sensor cable 3** of the M73 camera!



### Software Release MX-V7.0.5.16 – for MOBOTIX 7 camera model M73

A firmware update is required to use/convert an existing M73 as a thermal camera. From version 7.0.5.16 on, the new M73 thermal sensor modules are supported. A thermal sensor module can be combined with an image sensor module and another function module (IR light module). Thermal events are set up in the software in the same way as with the Mx6 cameras. The maximum frame rate of the M73 thermal sensors is again limited to **9 frames/second**. Newly ordered M73 cameras are already equipped with this new firmware ex works.

> **Download of Firmware Release 7.0.5.16** and detailed information in the release notes: [mobotix.com](http://mobotix.com) > [Support](#) > [Download Center](#) > [Software Downloads](#) > [Cameras](#)

**Available:** now

## New MOBOTIX Thermal Sensor Modules with Front Panel for M73: Ordering Information

Order Number	Description	MSRP*	Available
Mx-O-M73TA-336T100	CIF, no Thermal Radiometry, 45° x 35°, incl. M73 exchange front panel	3.299 €	Now
Mx-O-M73TA-336T150	CIF, no Thermal Radiometry, 25° x 19°, incl. M73 exchange front panel	3.299 €	Now
Mx-O-M73TA-336T280	CIF, no Thermal Radiometry, 17° x 13°, incl. M73 exchange front panel	3.299 €	Now
Mx-O-M73TA-336R100	CIF, with Thermal Radiometry, 45° x 35°, incl. M73 exchange front panel	3.799 €	Now
Mx-O-M73TA-336R150	CIF, with Thermal Radiometry, 25° x 19°, incl. M73 exchange front panel	3.799 €	Now
Mx-O-M73TA-336R280	CIF, with Thermal Radiometry, 17° x 13°, incl. M73 exchange front panel	3.799 €	Now
Mx-O-M73TA-640T050	VGA, no Thermal Radiometry, 90° x 69°, incl. M73 exchange front panel	5.799 €	Now
Mx-O-M73TA-640T080	VGA, no Thermal Radiometry, 69° x 56°, incl. M73 exchange front panel	5.799 €	Now
Mx-O-M73TA-640T100	VGA, no Thermal Radiometry, 45° x 37°, incl. M73 exchange front panel	5.799 €	Now
Mx-O-M73TA-640T150	VGA, no Thermal Radiometry, 30° x 26°, incl. M73 exchange front panel	5.799 €	Now
Mx-O-M73TA-640R050	VGA, with Thermal Radiometry, 90° x 69°, incl. M73 exchange front panel	6.499 €	Now
Mx-O-M73TA-640R080	VGA, with Thermal Radiometry, 69° x 56°, incl. M73 exchange front panel	6.499 €	Now
Mx-O-M73TA-640R100	VGA, with Thermal Radiometry, 45° x 37°, incl. M73 exchange front panel	6.499 €	Now
Mx-O-M73TA-640R150	VGA, with Thermal Radiometry, 30° x 26°, incl. M73 exchange front panel	6.499 €	Now

\* MOBOTIX MSRP prices are recommended net sales prices Ex Works (EXW) Germany. In some countries, MOBOTIX distributors have to set higher sales prices locally due to import regulations/duties.

The MOBOTIX thermal sensor modules for the M73 can be ordered immediately. The modules will be delivered in the order in which orders are received as early as July 2020, as MOBOTIX was able to build up stocks in advance due to the high demand situation (the usual delivery time for thermal cameras and sensors is 8 to 12 weeks from order).

### Note:

All [MOBOTIX Certified Apps](#) available for the M73 can currently only be used together with the optical sensor modules. Special apps based on the raw data of the new M73 thermal sensors are currently still under development and will be offered at a later date. However, the MOBOTIX standard video analysis software [MxActivitySensor](#) can also be used with the M73 thermal image sensors. The **audio module** already announced for the M73 will be available from **October 2020**, together with a new **MultiSense module**.

More information about the MOBOTIX 7 Plattform: <https://seven.mobotix.com>

## 2. New Optical Sensor Module For M73 – 30°, 60° And 120° Horizontal Viewing Angle



The M73 offers space for up to **three sensor and function modules**. An M73 can currently be operated with

- up to two optical 4K image sensor modules plus one functional module
- one optical and one thermal sensor module plus one one functional module

### New optical 4K sensor modules with 30°, 60° and 120° viewing angle

With the new thermal sensor modules and additionally three new **4K image sensor modules with the fields of view (horizontal x vertical) of 30° x 17°, 60° x 33° and 120° x 60°** - each in the variants day, night and day+night with movable IR cut filter - the M73 can be optimally equipped for even more applications.



The **color sensor modules with automatically controlled IR cut filter** can deliver high-resolution black-and-white images even in low light conditions or with the aid of an IR illuminator. For **maximum light yield and night vision**, especially outdoors with and without additional IR illuminators, MOBOTIX recommends using the **pure black-and-white night sensor modules** with 4K UHD resolution completely without IR filters. With automatic day/night switching between the separate day and night sensor module, an appropriately equipped M73 is the first choice when the best possible image quality is required under all conditions.

MOBOTIX M73: Complete range of optical 4K sensor modules and IR illuminators			
Order Number	Description	MSRP*	Available
Mx-O-M7SA-8DN040	<b>NEW:</b> 4K IR-Cut Day & Night Sensor Module WIDE, <b>120° x 60°</b>	379 €	Middle of August
Mx-O-M7SA-8DN050	4K IR-Cut Day & Night Sensor Module WIDE, 95° x 50°	379 €	Now
Mx-O-M7SA-8DN080	<b>NEW:</b> 4K IR-Cut Day & Night Sensor Module STANDARD, <b>60° x 33°</b>	379 €	Middle of August
Mx-O-M7SA-8DN100	4K IR-Cut Day & Night Sensor Module STANDARD, 45° x 25°	379 €	Now
Mx-O-M7SA-8DN150	<b>NEW:</b> 4K IR-Cut Day & Night Sensor Module TELE, <b>30° x 17°</b>	379 €	Middle of August
Mx-O-M7SA-8DN280	4K IR-Cut Day & Night Sensor Module TELE, 15° x 8,5°	379 €	Now
Mx-O-M7SA-8D040	<b>NEW:</b> 4K Day Sensor Module WIDE, <b>120° x 60°</b>	279 €	Middle of August
Mx-O-M7SA-8D050	4K Day Sensor Module WIDE, 95° x 50°	279 €	Now
Mx-O-M7SA-8D080	<b>NEW:</b> 4K Day Sensor Module STANDARD, <b>60° x 33°</b>	279 €	Middle of August
Mx-O-M7SA-8D100	4K Day Sensor Module STANDARD, 45° x 25°	279 €	Now
Mx-O-M7SA-8D150	<b>NEW:</b> 4K Day Sensor Module TELE, <b>30° x 17°</b>	279 €	Middle of August
Mx-O-M7SA-8D280	4K Day Sensor Module TELE, 15° x 8,5°	279 €	Now

## MOBOTIX M73: Complete range of optical 4K sensor modules and IR illuminators

Mx-O-M7SA-8N040	<b>NEW:</b> 4K Night Sensor Module WIDE, <b>120° x 60°</b>	279 €	Middle of August
Mx-O-M7SA-8N050	4K Night Sensor Module WIDE, 95° x 50°	279 €	Now
Mx-O-M7SA-8N080	<b>NEW:</b> 4K Night Sensor Module STANDARD, <b>60° x 33°</b>	279 €	Middle of August
Mx-O-M7SA-8N100	4K Night Sensor Module STANDARD, 45° x 25°	279 €	Now
Mx-O-M7SA-8N150	<b>NEW:</b> 4K Night Sensor Module TELE, <b>30° x 17°</b>	279 €	Middle of August
Mx-O-M7SA-8N280	4K Night Sensor Module TELE, 15° x 8,5°	279 €	Now
Mx-F-IRA-W	IR Light WIDE, infrared LED for wide angle lenses 95°-120° (typ. illumination range 30m**)	179 €	Now
Mx-F-IRA-S	IR Light STANDARD, infrared LED for standard lenses 45°-60° (typ. illumination range 30m**)	179 €	Now
Mx-F-IRA-T	IR Light TELE, infrared LED for telephoto lenses 15°-30° (typ- illumination range 30m**)	179 €	Now

\* MOBOTIX MSRP prices are recommended net sales prices Ex Works (EXW) Germany. In some countries, MOBOTIX distributors have to set higher sales prices locally due to import regulations/duties. The new sensor modules can be ordered now, delivery will start middle of August 2020.

\*\* depending on the environment/scenery

Original camera image: 15° x 8,5°



Original camera image: 30° x 17° (NEW!)



Original camera image: 45° x 25°



Original camera image: 60° x 33° (NEW!)



Original camera image: 95° x 50°



Original camera image: 120° x 60° (NEW!)



> Current demo clip for the day lens variants: <https://www.youtube.com/watch?v=kJIK6eRuGwM>

### 3. MOBOTIX MOVE NVR – Complete Solution With VMS & App For MOBOTIX MOVE Cameras



With our technologically broad MOBOTIX camera portfolio, you are ready for any video project and every requirement perfectly equipped. In addition to the decentralized IoT camera range, MOBOTIX also offers the classic centrally managed **MOBOTIX MOVE camera series**. This series includes three different camera types in various detailed designs: PTZ SpeedDome cameras, bullet cameras and dome cameras. These consistently weatherproof, high-quality IP cameras are equipped with the standard functions of central video systems, such as integrated infrared illumination, automatic day/night switching with mechanical IR cut filter, Wide Dynamic Range or High Speed PTZ.



MOBOTIX MOVE cameras are **centrally managed video systems** in the ONVIF S/G/T standard with H.264/H.265 and require an additional central **data storage** and a **video management system** that supports at least the ONVIF-S standard. For example, MOBOTIX MOVE cameras can (also) be managed in parallel with MOBOTIX IoT cameras via MxManagementCenter as a VMS solution and a MOBOTIX NAS as video storage centrally in a so-called **hybrid solution**.

#### MOBOTIX MOVE NVR - the New Standalone All-in-One Solution with Integrated Video Management Software



MOBOTIX now offers the **MOVE NVR (Network Video Recorder)**, a particularly practical and easy-to-use **plug & play solution** - ideal for local video surveillance systems with up to 16 MOBOTIX MOVE cameras. This compact end-to-end video solution is recommended for numerous applications: in retail stores, restaurants or private homes -

whenever the existing video analysis functions of the MOBOTIX MOVE cameras are sufficient (e.g. video motion detection, pre-programmed PTZ camera movements, periodic recordings, audio detection, tampering alarm, signal via external input, manual triggering). In principle, other ONVIF-S cameras including the MOBOTIX IoT series can also be used together with a MOBOTIX MOVE NVR. However, only basic camera functions (live, playback) are then



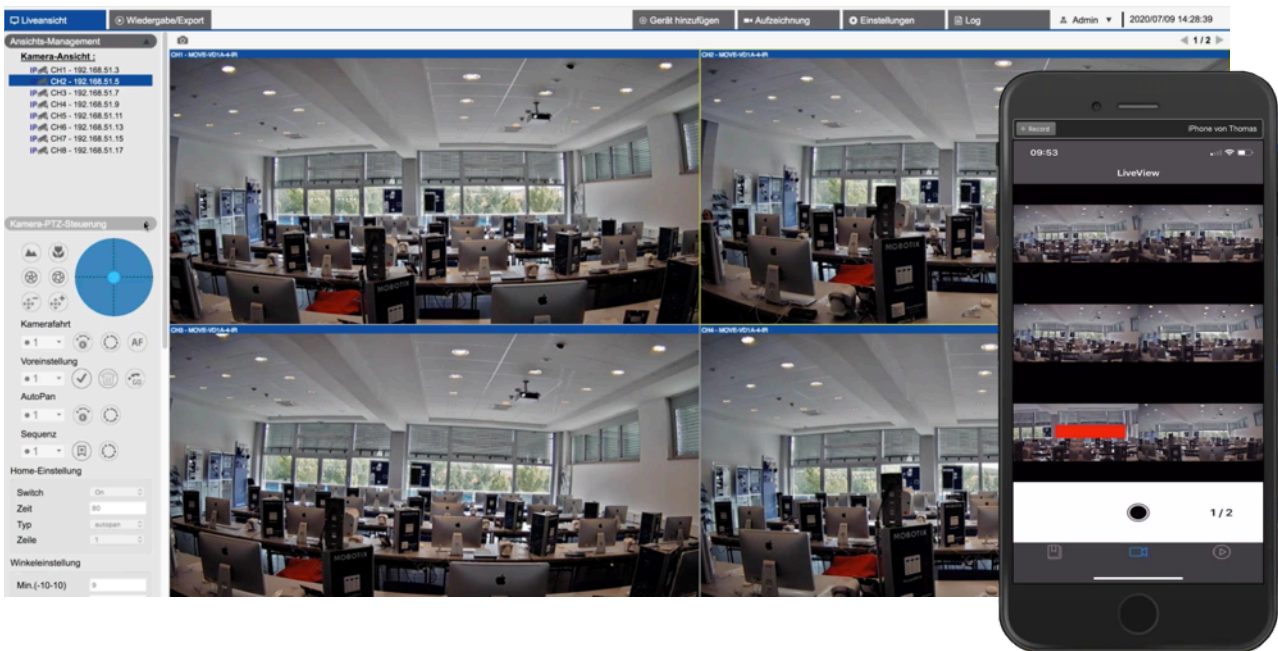
supported by the integrated, **cost- and license-free** **MOBOTIX MOVE NVR video management software**, which is tailored to the **MOBOTIX MOVE** cameras.

### For iOS and Android: Free **MOBOTIX MOVE NVR App**



Anyone looking for the "**MOBOTIX MOVE NVR**" app in the Apple and Google Play app stores will also find it in August 2020. This is a free app serving as a mobile VMS solution to display and control all **MOBOTIX MOVE** cameras connected to a **MOBOTIX MOVE NVR** (Live View, Playback View). The connection to the **MOBOTIX MOVE NVR** and the cameras is established locally via an additional **WLAN** connection.

In order to be able to access the cameras **from outside the local video network** using the **MOBOTIX MOVE NVR App**, the **MOBOTIX MOVE NVR** device must be assigned an IP address (or host name) that can also be accessed via the Internet. For example, you can use a Dynamic Domain Name System of an external service provider. Please make sure that in the case of a remote connection, the appropriate security data protection measures are taken (e.g. VPN, virtual private network).



Available free of charge: **MOBOTIX MOVE NVR Management Software** and **Mobile App (Android/iOS)**

### **Two devices with many talents: MOBOTIX MOVE NVR with 8 or 16 channels (8CH or 16CH)**

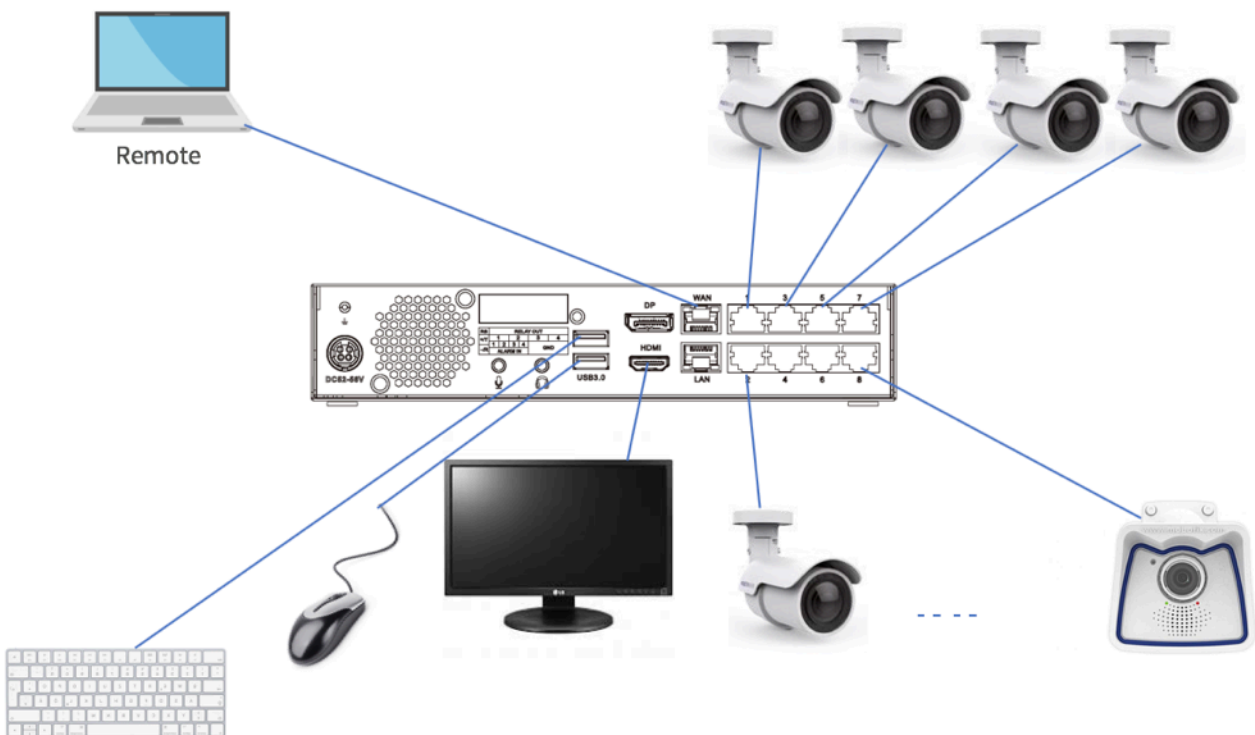
The new **MOBOTIX MOVE NVR** are available as **desktop devices in two versions**: one with 8 and one with 16 video channels and PoE ports (IEEE 802.3 af/at). The integrated PoE switch allows a maximum of 8 or up to 16 **MOBOTIX MOVE PoE** cameras (depending on the total power consumption of the cameras and the NVR model) to be **networked and powered directly with each other**. If the power requirements of the cameras connected exceed the capabilities of the **MOBOTIX MOVE NVR** (e.g. for the SpeedDome cameras), additional power supplies/PoE injectors can be integrated into the system. It is also possible to connect an **additional four or eight externally supplied IP cameras** to the **MOBOTIX MOVE NVR 8CH or 16CH**. In this way, cameras that are physically further away can be connected to the **MOVE NVR LAN Port** via an additional PoE switch using only one network connection cable.



Connections on the rear panel: MOBOTIX MOVE NVR 8CH (top) and MOBOTIX MOVE NVR 16CH (bottom)

Connecting a camera to the MOBOTIX MOVE NVR is very easy and everyday use does not require any specialized video knowledge. Thanks to the **video management software**, which is integrated directly into the device firmware and is specially tailored to the MOBOTIX MOVE cameras, and the direct connection of up to two high-resolution displays, keyboard, mouse and joystick, a MOBOTIX MOVE NVR can also replace a complete video workstation PC. By entering the IP address of the MOBOTIX MOVE NVR and a security password in a browser window, it is also possible to access the connected cameras from any standard PC at any time without installing any software (remote access).

In addition to the video management software, each MOBOTIX MOVE NVR device is supplied with accessories such as connection cables and a plug-in power supply unit.



One or two additional hard disk drives (HDD) per NVR are required for operation (mounted inside the housing of the device). Hard disks are currently not available from MOBOTIX but can be purchased from specialist dealers. Suitable HDD models, which MOBOTIX recommends for demanding 24/7 video surveillance applications, are listed here:

Manufacturer	Model Range	OS	Model Number	Firmware	Capacity
Seagate	SkyHawk	Linux	ST8000VX004	AV01	8TB
Western Digital	Purple	Linux	WD82PURZ	82.00A82	8TB
Seagate	SkyHawk	Linux	ST14000VX008	AV01	14TB
Western Digital	Purple	Linux	WD140PURZ	82.00A82	14TB



Once installed, the MOBOTOX MOVE NVR system does not incur any further costs, including future software updates. There are also no license fees. By separating the MOBOTIX MOVE NVR camera network from the rest of the company network (standalone system), the video system is safe from cyber attacks. **The MOBOTIX MOVE NVR devices can be ordered immediately. Delivery will start in mid-August 2020.**

#### MOBOTIX MOVE NVR: Ordering Information

Order Number	Description	MSRP*	Available
Mx-S-NVR1A-8-POE 	<b>MOBOTIX MOVE NVR Network Video Recorder with 8 integrated PoE IP-Camera Channels (12 IP-Cameras total support)</b> • Max. Storage capacity net (internal & external): 20 TB (2x 3.5" SATA3) • Delivery without hard disks (not available via MOBOTIX) • IP-Data-Throughput (Live & Recording): 80 up to peak 120Mbps • Recording & Playback: H.264 / H.265 • Support of ONVIF S conformant 3rd Party cameras • Incl. Power cable with EU plug (cable with US / GB / AU plug available on request) • APP remote access (IOS / Android), Live, Playback • iSCSI NAS Storage support	569 €	Middle of August
Mx-S-NVR1A-16-POE 	<b>MOBOTIX MOVE NVR Network Video Recorder with 16 integrated PoE IP-Camera Channels (24 IP-Cameras total support)</b> • Max. Storage capacity net: 28 TB (2x 3.5" SATA3) • Delivery without hard disks (not available via MOBOTIX) • IP-Data-Throughput (Live & Recording): 160 up to peak 240Mbps • Recording • Support of ONVIF S conformant 3rd Party cameras: H.264 / H.265 • Support of ONVIF S conformant 3rd Party cameras • Incl. Power cable with EU plug (cable with US / GB / AU plug available on request) • APP remote access (IOS / Android), Live, Playback • iSCSI NAS Storage support	699 €	Middle of August

\* MOBOTIX MSRP prices are recommended net sales prices Ex Works (EXW) Germany. In some countries, MOBOTIX distributors have to set higher sales prices locally due to import regulations/duties. The devices can be ordered now, delivery will start in the middle of August 2020.

## MOBOTIX MOVE NVR 8CH and 16CH – Technical Specifications

		
Model Name	<b>MOBOTIX MOVE NVR 8CH</b>	<b>MOBOTIX MOVE NVR 16 CH</b>
Order Number	Mx-S-NVR1A-8-POE	Mx-S-NVR1A-16-POE
Operation System	Embedded Linux	
CPU	Intel Apollo Lake E3930	Intel Apollo Lake J3455
RAM	LPDDR4, 2 x 1GB	LPDDR4, 4 x 1GB
Graphics	Intel HD Graphics 500	
Display Port Output & HDMI Output	1920x1080@60Hz (Full HD)	
Audio Input	MIC-in, 3.5 mm x1 earphone	
Audio Output	Line-out, 3.5 mm x1 earphone	
IPCAM Throughput	Average: 80 Mbps Peak: 120 Mbps	Average: 160 Mbps Peak: 240 Mbps
GPU Hardware Decoding	12 CH real-time display Up to 360 fps@D1 decoding	24 CH real-time display Up to 720 fps@D1 decoding
Compression Format	H.264 / H.265	
Build-in SATA Interface	3.5" SATA3 x2	
Max. HDD storage support (internal & ext. iSCSI)	20 TB	28 TB
WAN & LAN Uplink	RJ-45*1, 10/100/1000 Mbps	
LAN Port with PoE	RJ-45 x8, 10/100 Mbps	RJ-45 x16, 10/100 Mbps
PoE Level	IEEE 802.3 af/at x8	IEEE 802.3 af/at x16
PoE Budget: Each Port/Total	30W / 120W	30W / 140W
PoE & Switch Management	Linux SDK	
Supported Protocols	User Authentication, IEEE 802.1x, IPv4, TCP, UDP, DHCP, SMTP, RTP, RTSP, HTTP, NTP, DDNS, iSCSI	
Unit Dimensions (mm)	220 x 275 x 44	280 x 300 x 44
Unit Weight (kg)	1.4	2.5
Operation Temperature	32°F ~ 104 °F / 0°C ~ 40°C	
Operation Relative Humidity	10% ~ 90% Non-condensing	
System Power Supply	AC 100~240V, 180W, 56V/3.2A	AC 100~240V, 200W, 56V/3.57A

**Download technical data sheet and user manuals of MOBOTIX MOVE NVR devices:**

[mobotix.com](http://mobotix.com) > [Support](#) > [Download Center](#) > [Marketing & Documentation](#) > [Technical Data Sheets](#) > [Accessories](#)  
[mobotix.com](http://mobotix.com) > [Support](#) > [Download Center](#) > [Marketing & Documentation](#) > [User Manuals](#) > [Accessories](#)

## 4. MxManagementCenter (MxMC) 2.3.2 – Bugfixes And New Features



MxManagementCenter (MxMC) is the powerful, intuitive MOBOTIX video management system for Windows and macOS systems. The latest version **MxMC 2.3.2** again offers valuable new features and is available for **free download** from the MOBOTIX website. All MxMC 1.7 and higher licenses that have already been activated are automatically transferred when updating to MxMC 2.3.2.

### **MxMC 2.3.2 with cumulative counting corridor evaluation (available free of charge, no additional licences)**

MxMC now also allows the higher-level evaluation of [MxAnalytics Counting Corridors](#) of several integrated cameras and the display of the overall result calculated from this in a separate dialog.

For example, after the corresponding definition of counting corridors at **all entrances and exits of a shop**, customers are counted and evaluated as passages in "north direction" when entering and as passages in "south direction" when leaving. The **current number of visitors in the shop** is then derived from the Differenz between all passages in the north direction and the passages in the south direction. From this, together with the previously defined limit, the number of customers who are still allowed to enter is determined and displayed in a new dialog **Customer Counter**.

Demo Video Customer Counter:

<https://www.youtube.com/watch?v=kLme7Puli-g>



Download and Release Notes of MxManagementCenter 2.3.2:

[mobotix.com > Support > Download Center > Software Downloads > MxManagementCenter](#)

**Available:** Now

## 5. MxBell App Version 2.3.1 – Bugfixes And New Features

The mobile remote station for MOBOTIX IP video door stations and IoT cameras including M73. With push notifications for all door station and camera events.

When developing MxBell, MOBOTIX placed great importance on maximum stability in addition to ease of use and clarity – especially with low connection quality.



**New in this version 2.3.1** is - besides some bug fixes - the easy **import and export of the current app configuration** via the appropriate tools available with your mobile device, e.g. Air Drop, WhatsApp or E-Mail.

### You now have the following options:

- Transferring the current app configuration to other mobile devices
- Manage multiple app configurations on a mobile device
- Create a backup of the current app configuration
- Faster operation of the camera list and easier camera change

MxBell 2.3.1 can be downloaded free of charge from the [App Store](#) (for iOS devices from iOS 11) and the [Google Play Store](#) (for Android devices from Android 5.0.0).

### System requirements:

- From iOS 11 and Android 5.0.0
- MOBOTIX IP Video Doorstations ("P3") as of Firmware 4.7.2.18
- MOBOTIX IP Cameras ("P3") as of Firmware 4.7.2.18
- MOBOTIX IP Cameras ("Mx6") as of Firmware 5.2.1.4
- MOBOTIX IP Cameras ("MOBOTIX 7/M73") as of Firmware 7.0.1.x
- Depending on the end device, the app can manage over 100 cameras (e.g: Apple iPhone 11 more than 130 cameras; Samsung Galaxy S9 up to 50 cameras)

### Demo Videos on new functionalities:

Easier Handling: <https://youtu.be/ErGP9Ps2dDQ>

Import/Export: <https://youtu.be/48HGWFVs8t4>



## 6. MOBOTIX NAS: Software Service Releases



### Free Software Updates for all MOBOTIX NAS devices

New versions of the MOBOTIX NAS operating system firmware are now available for free download (with bug fixes and security enhancements) from the MOBOTIX website in the **Download Center**. Each NAS software component has to be downloaded to a PC (Windows), a network connection between the PC and the NAS must be established.

### Fixed problems for the latest NAS operating system firmware versions

- Command injection vulnerability fixed (CVE-2018-19949)
- Fixed stored cross-site scripting vulnerability in user description (CVE-2018-19953)
- Fixed cross-site scripting vulnerability stored in File Station (CVE-2018-19943)

### Unique range of functions

All MOBOTIX NAS models have special MxMC interface software that works in the background. This is the only way for a MxManagementCenter user to play back and export the recordings of all ONVIF cameras (MOBOTIX MOVE and ONVIF-S cameras from other manufacturers) stored on the MOBOTIX NAS directly using MxMC. Depending on the model, up to 8, 16 or 32 ONVIF cameras (only Profile S required) can be stored on a single MOBOTIX NAS device. In addition or alternatively, you can also store the recordings of the decentralized MOBOTIX IoT cameras of the Mx6 and MOBOTIX7 series - without any license-related limit on the number of cameras!

### Download and Release Notes of MOBOTIX NAS software:

[mobotix.com](http://mobotix.com) > [Support](#) > [Download Center](#) > [Software Downloads](#) > [MxNAS](#)

MOBOTIX NAS software components (latest version numbers)	Function of the software
MOBOTIX NAS Device Finder for Windows 6.6.0.1112 > <a href="#">Link</a>	Software for PC (Windows) for commissioning and maintaining all MOBOTIX NAS devices (Mx-S-NAS2A-8, Mx-S-NAS4A-16, Mx-S-NAS8A-32)
MOBOTIX NAS Device Finder for Apple macOS 2.6.1.0304 > <a href="#">Link</a>	Software for Apple (mac OS) for commissioning and servicing all MOBOTIX NAS devices (Mx-S-NAS2A-8, Mx-S-NAS4A-16, Mx-S-NAS8A-32)
MOBOTIX NAS Container Station 1.8.3207* > <a href="#">Link</a>	(App Center) Software for all MOBOTIX NAS devices (Mx-S-NAS2A-8, Mx-S-NAS4A-16, Mx-S-NAS8A-32) for further installation of the Recorder Software (QVRPro)
MOBOTIX NAS QVRPro Server 1.2.3.1* > <a href="#">Link</a>	(App Center) Software for all MOBOTIX NAS devices (Mx-S-NAS2A-8, Mx-S-NAS4A-16, Mx-S-NAS8A-32) for recording from ONVIF-S cameras; the Container Station must be installed first
MOBOTIX NAS 2-Bay/4-Bay Operating System 4.3.4.1351 > <a href="#">Link</a>	Operating system firmware for the MOBOTIX NAS Mx-S-NAS2A-8 and Mx-S-NAS4A-16; MOBOTIX NAS devices are delivered with operating system firmware already installed, which can be updated using the Device Finder
MOBOTIX NAS 8-Bay Operating System 4.3.4.1351 > <a href="#">Link</a>	Operating system firmware for the MOBOTIX NAS Mx-S-NAS8A-32; MOBOTIX NAS devices are delivered with operating system firmware already installed, which can be updated using the Device Finder

\* Software is stored on a previously installed hard disk (HDD) of the NAS; [the current HDD whitelist can be found here](#) >

## 7. MOBOTIX Professional Services – Service Package Exclusively For MOBOTIX Partners



### **EXCLUSIVE for our partners: MOBOTIX Professional Services (not yet available in the DACH region!)**

People's security needs are constantly changing. MOBOTIX not only keeps pace with this development, but is also one step ahead. Our systems are becoming more and more powerful. Completely new and complex applications are emerging. In order to operate them optimally, many parameters are required for setup and support. As a MOBOTIX partner, we provide you with exclusive and individual support for your project.

### **Your client is also our king - together for top satisfaction**

Only if you are happy with MOBOTIX solutions can you run your business in such a way that your customers are completely satisfied. MOBOTIX Professional Services can take a lot of the pressure off you if you wish. We would be happy to pre-configure your MOBOTIX cameras ex works. MOBOTIX specialists are available to assist you worldwide. If you wish, they can also help you directly at the installation site of your video system. This is the best possible service at a fair price.

### **Concrete, tangible, hands-on: Our service helps you as a partner**

An application does not work as it should? The installation is complex? Your full order books make comprehensive customer service impossible or you have a staff shortage? Then we are your reliable partner.

### **Work with MOBOTIX Professional Services without any worries:**

- Pre-Configuration Service - Tailor-made configuration ex works
- Field Engineering - Configuration, commissioning and training directly on site
- Remote Support Services - Troubleshooting via secure remote IP connection
- On-Site Support - Troubleshooting directly at the customer's site
- Cybersecure Password Reset - Secure process, simple procedures

**Get to know the comprehensive services and the many advantages now.** You can find all the details on our website in the section [Partner > Professional Services](#) and there in our detailed brochure on MOBOTIX Professional Services. **Please note, that some benefits may not be available in all regions.**



## 8. Further MOBOTIX News – M73 With SySS Certificate, Back on Track, App Demo Clips

### MOBOTIX M73 now also with SySS security certificate

With the M73, the new MOBOTIX high-performance camera based on Artificial Intelligence (AI) has also received the SySS IT security certificate. This means that the SySS GmbH now attests that the entire MOBOTIX IoT camera series has a **particularly high level of cyber security**. In addition to the M73, the M16, as a representative of the Mx6 series from MOBOTIX AG, also has the SySS certificate. This continues the MOBOTIX Cactus Concept, which stands for a **reliable and fully protected end-to-end video system** against hacker attacks.



More information: <https://www.mobotix.com/en/company/latest-news>

+++++

### Back on Track: With intelligent video technology on the way "back to the new normality"



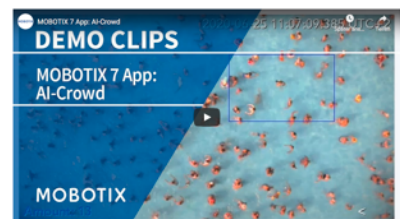
The world has changed with the COVID 19 pandemic. There are many new challenges and regulations. Intelligent MOBOTIX video technology can support companies, public as well as private facilities and institutions during and after the lockdown and help to return to "normal operation". MOBOTIX has bundled the available "back-on-track video technology solutions" for its partners and customers. This makes it easier for industries and sectors such as retail, gastronomy, airports, train stations, municipalities, industry, service companies and educational institutions to "get back on track".

More information about this current MOBOTIX campaign: <https://www.mobotix.com/en/backontrack>

+++++

### New demo video clips on the MOBOTIX website and on YouTube

Do you already know our latest demo clips about our certified app solutions available for the M73? You can find them directly in our [YouTube Channel](#) and of course also on our website under the individual apps.



Subscribe to the MOBOTIX YouTube channel:

<https://www.youtube.com/user/MobotixAG>



## 9. Schedule & Important Links

### New Software & Services – Download from MOBOTIX Website:

MOBOTIX Kamera-Firmware V7.0.5.16	Download now available (MOBOTIX Website)
MxManagementCenter (MxMC) Version 2.3.2	Download now available (MOBOTIX Website)
MxBell App Version 2.3.1	Download now available (App Stores)
MxNAS Firmware Updates	Download now available (MOBOTIX Website)

### New Hardware – Now Available For Order (Applies To MOBOTIX Partners And End Customers):

New thermal Sensor Modules for M73	Delivery starts now
New optical Sensor Modules for M73	Delivery starts middle of August 2020
MOBOTIX MOVE NVR	Delivery starts middle of August 2020

### All Products On The MOBOTIX Website:

<a href="http://www.mobotix.com">www.mobotix.com</a> > Products	(for Hardware)
<a href="http://www.mobotix.com">www.mobotix.com</a> > Support > Software Downloads	(for Software)
<a href="http://www.mobotix.com">www.mobotix.com</a> > Support > Manuals	(Manuals/Quick Installs)

### New Price Lists On The MOBOTIX Website:

In the non-public partner area: [Customer Portal](#) As of 15 July 2020  
(Interactions> Sales Tools > Price Lists)

### MOBOTIX 7 sales support (brochures, presentations, videos, ...) is available in the

MOBOTIX Partner Toolbox for PC, tablet and smartphone



- > [App Store](#)
- > [Google Play](#)
- > [Website](#)

### Product Training Seminars and Events:

The current dates can be found on the MOBOTIX website under: [Company > Calendar](#)

#### Additional webinar to this Product Announcement (Duration: 60 min, Language: English)

Tuesday, 18 August 2020 9:00 am (Central European Summer Time / Germany) or

Tuesday, 18 August 2020 4:00 pm (Central European Summer Time / Germany)

Registration link (for both sessions): <https://register.gotoweinar.com/rt/7612864986944959248>